

benefit from this service?

Domicile Physiotherapy

Physiotherapists

All of the physiotherapists that will work with you when you access the Domiciliary Physiotherapy Service are Senior Physiotherapists who are at least four years post-qualification as well as all being members of The Chartered Society of Physiotherapy and Registered with The Health Professions Council.

How to make an appointment

If you wish to make an appointment or have advice about an appointment you can contact the Physiotherapy Department on 020 7806 4010 or fax on 020 7806 4009.

Appointment times for Domiciliary Physiotherapy are generally available between Monday to Friday from 10am – 5pm (last appointment at 4:15pm), however exceptions may be able to be accommodated.

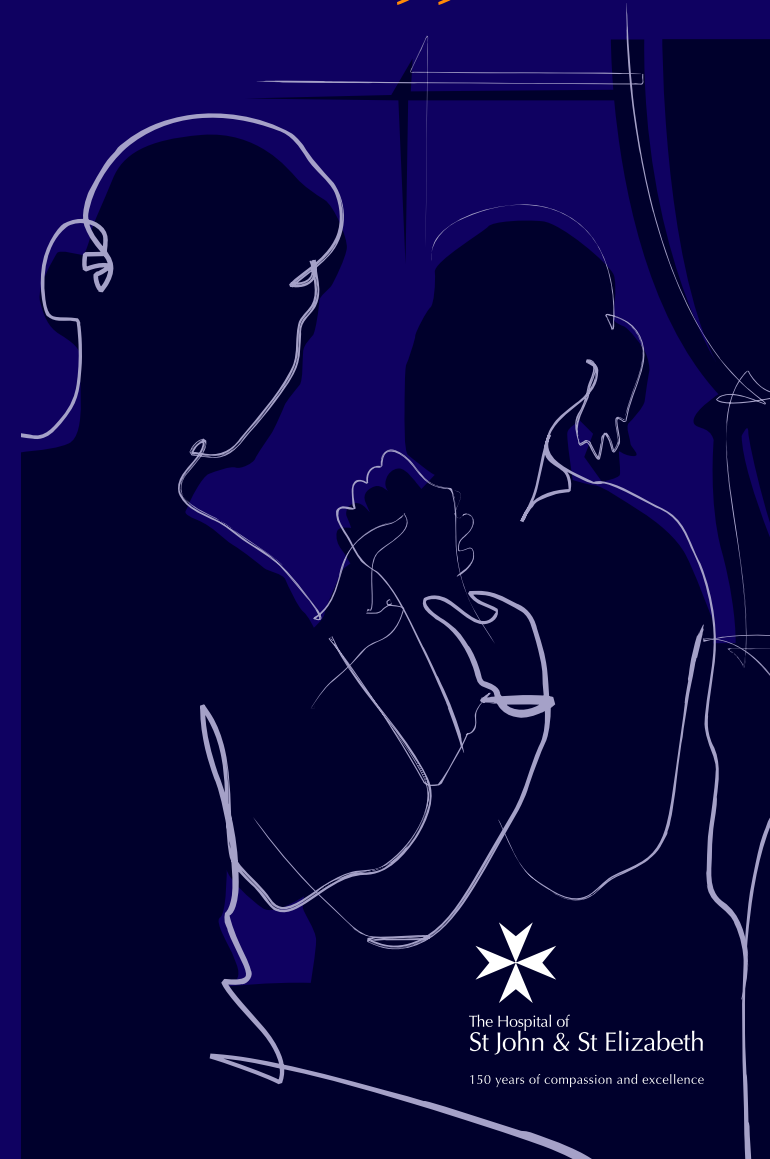
Hospital of St John & St Elizabeth

60 Grove End Road, St John's Wood
London NW8 9NH
Telephone: 020 7806 4000
Fax: 020 7806 4001
email: info@hje.org.uk
www.hje.org.uk

Registered charity no: 235822
November 2008

“
I can't leave my
house, but I need
physiotherapy

”



The Hospital of
St John & St Elizabeth
150 years of compassion and excellence

How do I know I need or can benefit from this service?

Input from the community-based physiotherapist can help your return home from hospital be a more successful and supported transition, or in some cases could prevent admission to hospital.

Domiciliary physiotherapy service

Our domiciliary service provides assessment and treatment of patients requiring physiotherapy input in your own home.

The service is based at the Hospital of St John & St Elizabeth, and therefore is available to patients living within a three mile radius of St John's Wood.

Domiciliary physiotherapy allows the therapist the opportunity to assess you in your own home environment. By doing this we can identify and address any specific difficulties you may be experiencing.

Conditions

Conditions suitable for referral include:

- Orthopaedic conditions
e.g. Hip/Knee replacements, Fractures
- Neurological conditions
e.g. Stroke, Parkinsons Disease
- Musculoskeletal conditions
e.g. Back/Neck Pain
- Respiratory conditions
e.g. Chest Infection/COPD
- Loss/decrease of mobility/function
- Fear or history of falls

However, other conditions may also benefit from the input of a physiotherapist. Referrals can be made through your GP, Hospital Consultant or you can self refer.

In addition, we can refer you on to other medical or therapy staff where this would be appropriate or beneficial. The therapist can also assess your outdoor mobility and address any issues you have with accessing the community environment.

Charges for Treatment

The Hospital of St John & St Elizabeth recognises all major insurance companies. Patients are advised to check their individual level of cover prior to starting treatment.

Patients are advised that they will be required to pay for their own treatment unless they can provide an insurers pre-authorisation number.